

165 QUICK START INSTRUCTIONS

INSTALLATION & START UP

1. Install unit as per local plumbing codes. (Refer to detail instructions in operation manual) **Avoid pinched o-rings during installation by applying (provided with install kit) NSF certified lubricant to all seals.** Be sure to leave the unit in the "BYPASS" position.
2. Connect the drain line to the valve.
3. Connect the brine line from the valve to the air check / safety elbow as per figure 1. **Double check to make sure all connections are assembled correctly and the brass and plastic nuts are tight and secure to prevent leaks.**
4. Add water to the brine tank until it is 2" deep in the bottom of the tank. Do not add salt at this time. Turn off main water supply.
5. Plug the power transformer into an approved power source. Connect the power cord to the valve.
6. When power is supplied to the control, the screen will display TIME OF DAY and DEFAULT GALLON SETTING. If the valve is not in service it will read "WAITING PLEASE" while the valve returns to the service position.
7. To manually cycle the valve to the BACKWASH position, press and hold the SET/REGEN button. If screen is locked, press "MENU" for 3 seconds to unlock. To initiate an immediate regeneration, press the SET / REGEN button for 3 seconds, an option for delayed or immediate regeneration will appear. Press the SET / REGEN button again and delayed will begin flashing, press the down arrow button to have immediate flash, press the SET / REGEN button and then press the menu button and the valve will immediately start into manual regeneration.
8. Open the inlet on the bypass valve slowly and allow water to enter the unit. (The outlet of the bypass should remain closed to prevent any fines or debris from entering the plumbing system) Allow all air to escape from the unit before turning the water on fully then allow water to run to drain for 3-4 minutes or until all media fines are washed out of the softener.
9. Press any button to advance to the BRINE position. Check the water level in the brine tank to insure the valve is drawing brine properly.
10. Press any button to advance to the RINSE position. Check the drain line flow. Allow the water to run for 3-4 minutes or until the water is clear.
11. Press any button to advance to the REFILL position. Check that the valve is filling water into the brine tank. Allow the valve to refill for the correct amount of time as displayed on the screen to insure a proper brine solution for the next regeneration.
12. The valve will automatically advance to the service position. Open the outlet valve on the bypass. Add salt to brine tank.
13. Program unit.

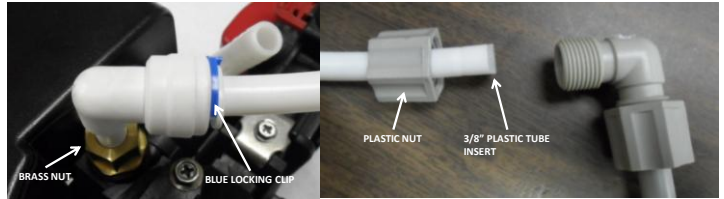


Figure 1. Brine Line Connections

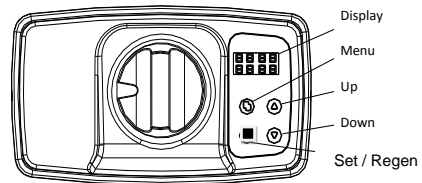


Figure 2. Key Pad Configuration

PROGRAM INSTRUCTIONS

Press the MENU button, if HOLD appears, the screen is locked. Press and hold the MENU button for three seconds to unlock screen.
 Press the MENU button again to enter program mode. "REGIONAL US" will appear.
 Press the DOWN button twice to advance to MO-DA-YE (MONTH-DAY-YEAR).
 Press the SET/REGEN button to enter MO-DA-YE option and change the values.
 Press the UP or DOWN button to adjust months. Press SET/REGEN to accept values and advance to days.
 Press the UP or DOWN button to adjust days. Press SET/REGEN button to accept value and advance to year.
 Press the UP or DOWN button to change year. Press the SET/REGEN button to accept value.

MO-DA-YE
10-23-09

Press the DOWN button once to advance to TIME.
 Press the SET/REGEN button to enter TIME option and change the values.
 Press the UP or DOWN button to adjust the hours. Press SET/REGEN to accept values and advance to minutes.
 Press the UP or DOWN button to adjust the minutes. Press SET/REGEN button to accept value and advance to AM/PM.
 Press the UP or DOWN button to change AM/PM. Press the SET/REGEN button to accept value.

TIME
07:28 PM

Press the DOWN button twice to advance to REG.CAP. (unit capacity in gallons). Refer to gallon capacity charts located on page 3 of 165 Operation Manual.
 Press the SET/REGEN button to enter REG.CAP. option and change the values.
 Press the UP or DOWN button to adjust the first two digits of the of gallons (01-99). Press the SET/REGEN button to accept value and advance to adjust the last two digits of the gallons (01-99). Press the SET/REGEN button to accept value.

REG.CAP.
2000G

Press the MENU button to exit program mode.