



## COLUMN SUMP PUMP OPERATING & INSTALLATION INSTRUCTIONS

Your pump has been carefully packaged at the factory to prevent damage during shipping. However, occasional damage may occur due to rough handling. **Carefully inspect your pump** for damages that could cause failures. Report any damage to the Pump Installer from whom you purchased the pump. Please read these instructions carefully. **Failure** to comply to instructions and designed operation of this system, may **void** the warranty.

### MODEL

CSP33



#### **IMPORTANT:**

Prior to installation, record Model, Serial Number and Date Code from pump nameplate for future reference.

MODEL: \_\_\_\_\_

SERIAL #: \_\_\_\_\_

DATE CODE: \_\_\_\_\_

INSTALLATION DATE: \_\_\_\_\_

A Division of  
**Canature**  
NORTH AMERICA

Kitchener, ON  
20 Steckle Place, Unit 21, N2E 2C3  
Regina, SK  
655 Park Street, S4N 5N1  
[www.novowater.com](http://www.novowater.com)  
[support@novowater.com](mailto:support@novowater.com)

1-877-655-6686

## SAFETY INSTRUCTIONS:

The pump that you have purchased is produced with the latest in material and workmanship. Always remove the plug from the electrical outlet before installing the pump. Before installation and operation, we recommend the following procedures:

1. Check with your local electrical and plumbing codes to ensure you comply with the regulations. These codes have been designed with your safety in mind. Be sure you comply with them.
2. We recommend that a separate circuit be lead from the home electrical distribution panel properly protected with a fuse or a circuit breaker. We also recommend that a ground fault circuit be used. **Consult a licensed electrician for all wiring.**
3. The ground terminal on the three prong plugs should never be removed. They are supplied and designed for your protection. **Do not use an extension cord.**
4. Do not stand in water when connecting or disconnecting power cord from outlet.
5. This product should be connected to a three prong grounded outlet equipped with a ground fault circuit interrupter.
6. Do not pump flammable liquids with this pump as an explosion or fire could result.
7. Do not run this pump dry. Running your pump without water will damage the pump bushing, reduce the life of the pump and void the warranty.
8. This product does not require lubrication. A special oil has been put in the motor housing at the factory for lifetime lubrication of the bearings. Use of any other oil can cause and void the warranty.

## MATERIAL REQUIRED FOR COLUMN SUMP PUMP APPLICATION

### Column sump pump installation

- Desired length of 1 ½" (38 mm) ABS pipe
- Elbows and fittings to run discharge pipe
- ABS cement
- (1) - 1 ½" (38 mm) ABS coupling to connect to the pipe to check the valve
- (1) - 1 ¼" (32 mm) check valve

### Tools Required

- Screwdrivers
- Hacksaw to cut pipe
- Knife to assist in pipe cutting
- Round file to smooth pipe ends
- Pipe wrench
- Adjustable wrench to tighten fittings

## APPLICATION

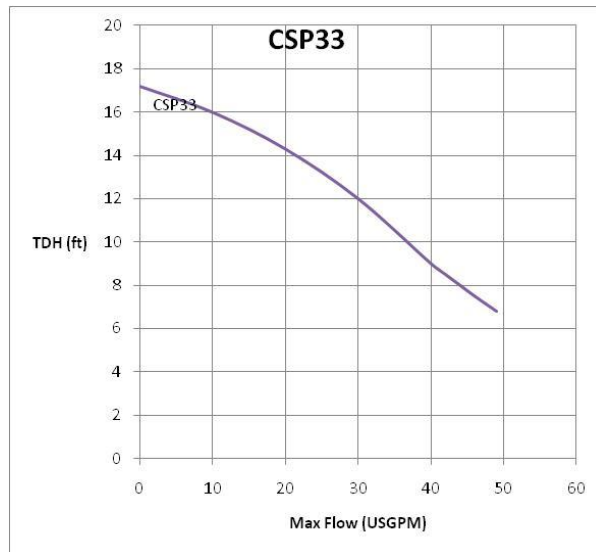
This domestic sump pump is suitable for application where the total vertical distance (head) does not exceed 15' (4.6 m). It is designed as an economic and efficient means of protecting homes against water damage through seepage, where there is no natural drainage. **Friction loss in pipe not included.**

CAPACITY:      50 USGPM (189 l/m) @ 5'(1.5 m) HD  
                      35 USGPM (132 l/m) @ 10'(3 m) HD  
                      15 USGPM ( 57 l/m) @ 15' (4.6 m) HD

## FEATURES

- 1 ¼" (32 mm) NPT Discharge Outlet
- Screened top suction inlet prevents debris from entering the pump and damaging the impeller
- Thermal overload motor protection
- Adjustable float switch for automatic operation
- Open-type impeller allowing small particles to pass without damage
- 8 foot power cord
- Thermoplastic and corrosion resistant pump body to ensure long life
- 2 Year Guarantee

## PERFORMANCE



### Column Sump Pump Specifications

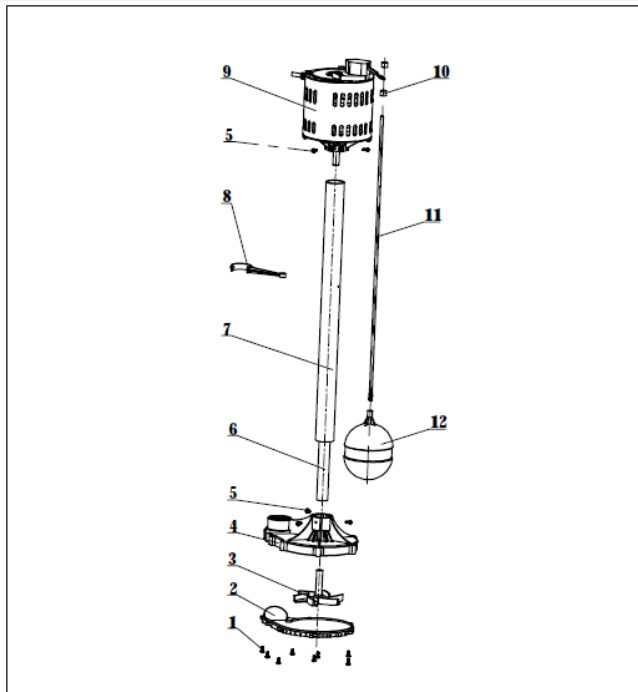
Item #	Model Number	Description	TDH (ft/m)	* Max Flow (usgpm/lps)	Solids Handling	HP	Voltage	Frequency Hz	Rated Amp	Maximum Amp	Output Power (W)	Motor Speed
45010007	CSP33	Column Sump Pump	17/5.2	49/3.1	1/8"	1/3 HP	115	60	4.0	8.8	250	1750

\* Note: Maximum flow based on a minimum 6.5' Head

## INSTALLATION STEPS

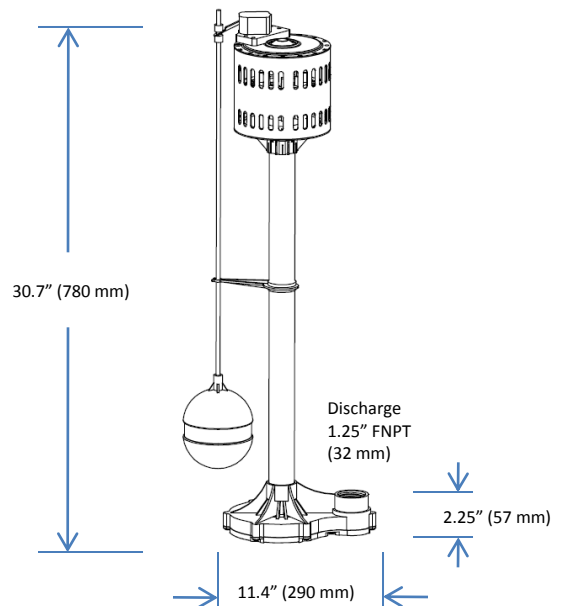
- STEP 1:** Locate the rod, the float and the rubber washers in the pump carton. Secure rod's guide to pump's column. Push the rod through the rod guide, then push a rubber washer about six inches from top rod end. Insert rod end through the top mount switch opening and place the second rubber washer over the top rod end. Thread the float into the bottom rod end about six to eight turns. Depth of pumping level may be adjusted by changing the position of the lower rubber rod washer.
- STEP 2:** Install the required check valve in the 1 ¼" (32 mm) discharge of the pump's base. Thread in tightly. Using 1 ½" (38 mm) ABS coupling and ABS pipes, connect the discharge line to the check valve, and run it to the desired waste location throughout the basement wall of your house. Otherwise, drain hose kits are available. You may also connect a kit to the check valve with a clamp and run the pipe to the same location. Be advised that restriction in these kits is important and increase the head of the discharge line.
- STEP 3:** Position the sump pump in centre of the sump pit approximately 18" (46 cm) diameter X 25" (64 cm) deep. **Plug the pump motor three prong plug/cord into a grounded electrical outlet.** Fill the sump pit with water to check pump operation. Pump should start automatically when the switch lever is activated by the rubber washer and stop when the water has been discharged and the float returns to the bottom of the sump pit.

## EXPLODED VIEW



6	SCN250-005-0	shaft	1	12	SCN250-009	float	1
5	GB845-85	screws	6	11	SCN250-006	float rod	1
4	SCN250-001	pump body	1	10	SCN250-008	rubber loop	2
3	SCN250-003	impeller	1	9	SCN250-010-0	motor	1
2	SCN250-002	diffuser	1	8	SCN250-007	clamp	1
1	GB845-85	screws	8	7	SCN250-004	pipe	1
No.	Item No.	Description	Qty	No.	Item No.	Description	Qty

## PUMP DIMENSIONS



## TROUBLE SHOOTING GUIDE CHECKLIST

**NEVER MAKE ADJUSTMENTS TO ANY ELECTRICAL APPLIANCE OR PRODUCT WITH THE POWER CONNECTED. DON'T JUST UNSCREW THE FUSE OR TRIP THE BREAKER, REMOVE THE POWER FROM THE RECEPTACLE.**

### **Motor does not run**

- Switch is *off* position
- Blown fuse
- Tripped breaker
- Plug disconnected
- Corroded plug
- Low water level
- Thermal overcharge
- Defective switch/float
- Defective motor
- Improper float position
- Turn switch to *on* position
- Replace
- Reset
- Re-install
- Clean prongs
- Add water and verify
- Cool the motor
- Replace
- Replace/repair
- Check movement

### **Pump does not deliver to full capacity**

- Jammed impeller
- Plugged check valve
- Blocked suction/inlet
- Discharge leak
- Blocked line/pipe
- Worn impeller
- Defective motor
- Clean
- Clean/replace
- Check for debris in pit and clean
- Repair
- Check for debris or ice
- Repair/replace
- Replace

### **Pump does not shut off**

- Defective switch
- Float obstruction
- Blocked suction/inlet
- Replace
- Adjust/check
- Check for debris in pit and clean

### **Pump cycles too frequently**

- Check valve not installed or leaking
- Float stops too close
- Replace or repair
- Adjust float rod stop length



## **2 Year Limited Warranty**

Dynamic Pumps warrants this pump to be free from defects in material and workmanship for a period of 2 years from date of manufacture.

This pump is guaranteed to do the work for which it is intended when properly installed and operated. The only exception shall be when proof of purchase or installation is provided (end user bill of sale required) and then the warranty period shall be from the date thereof.

### **HOW TO CLAIM WARRANTY**

The dealer from whom you purchased your pump has a thorough knowledge of its operation and maintenance. If trouble develops, please consult the dealer.

The manufacturer's obligation under this Warranty shall be limited to the repair or replacement of any parts found by the manufacturer to be defective, provided the part or the assembly is returned freight prepaid to the manufacturer or its authorized service centre.

If a unit or part should prove defective within 24 months, return it to your dealer, transportation charges prepaid. The repair will be made or a replacement unit or part will be supplied free of charge. The serial number of the unit, or unit from which the defective part is taken, must be supplied.

This warranty does not oblige the manufacturer to bear the cost of field labor or transportation in connection with the replacement or repair of defective parts or units, nor shall it apply to any product upon which repairs or alterations have been made, unless authorized by the manufacturer.

The manufacturer shall in no event be liable for consequential damages or contingent liabilities arising out of the failure of any product, its power unit or its accessories to operate properly. No express, implied or statutory warranty other than herein set forth is made authorized to be made by the manufacturer.